



it's about time

## Kx Streaming Analytics –



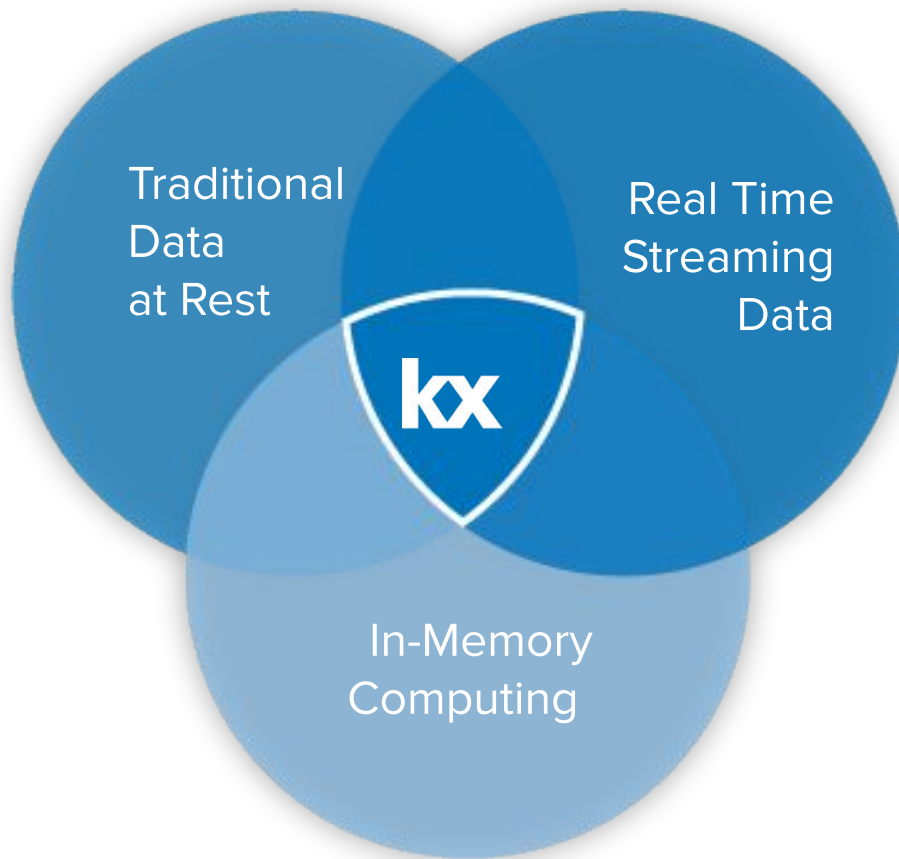
Ferenc Bodon  
Senior Architect, Kx

[fbodon@kx.com](mailto:fbodon@kx.com)

19 October 2020

---

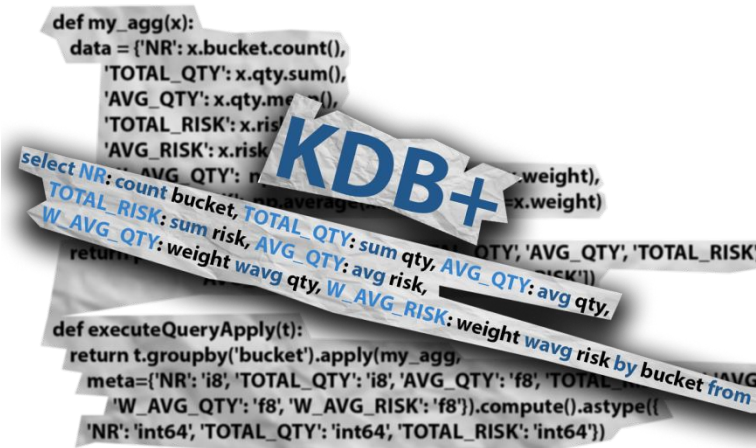
STAC Global Live Summit, Fall 2020.



“Most of our clients are extremely aware of the fact that they need a really solid data architecture – part of that data architecture will absolutely require access to in-memory technology, and that’s where our customers see us fitting in.”

Gerry Buggy  
Chief Strategy Officer, Kx

## Simplicity and Elegance without compromising Performance



- Inherent parallelisation
- Vector programming
- Roots in mathematics. Lists, maps, functions with the same syntax
- Advanced functional programming
- Tables are first class citizens
- **q-sql**



KDnuggets article: <https://www.kdnuggets.com/2020/04/python-data-analysis-really-that-simple.html>

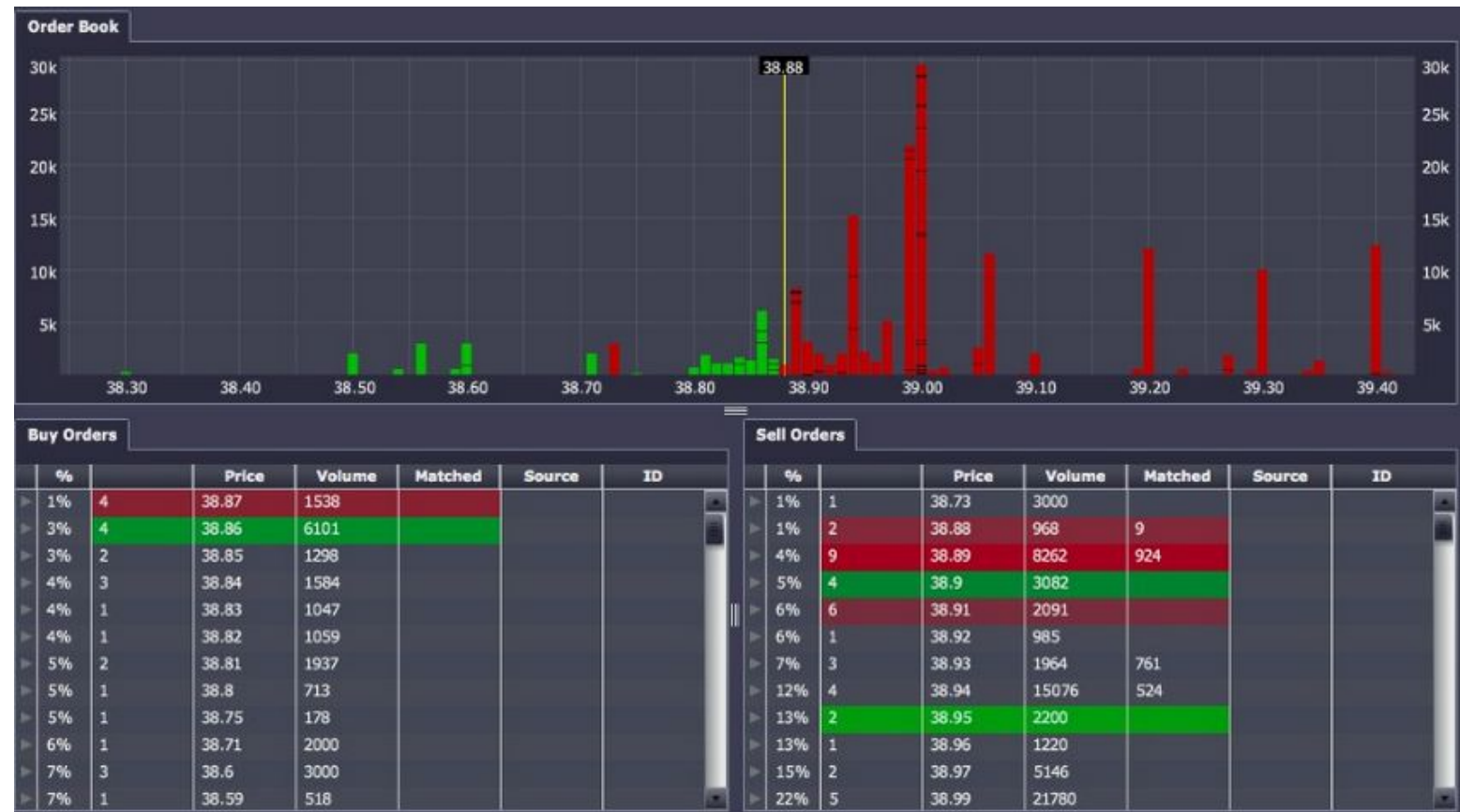


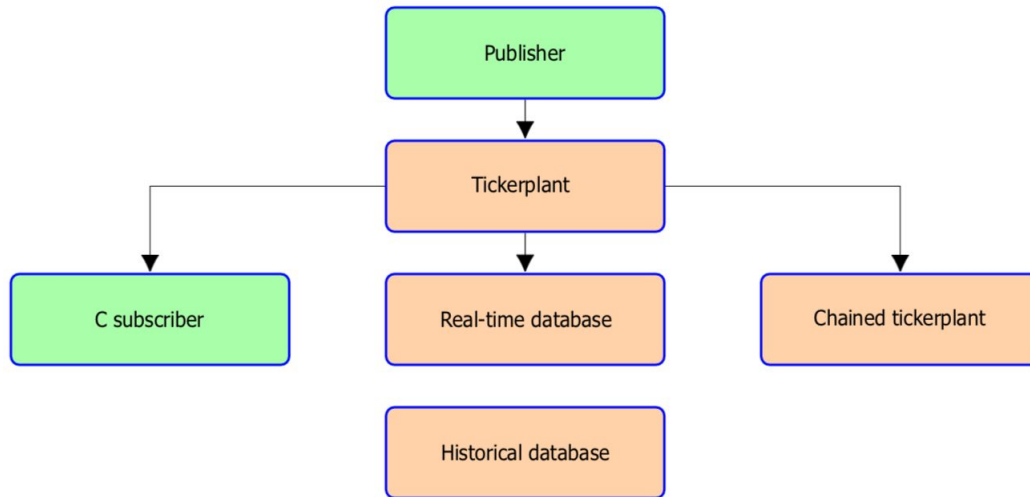
# Business Case: Build the order book in real-time, e.g. Dynamic TOB



Kdb+ is highly optimized for **vector operations** so the framework uses this strength. For example, instead of re-running the same code multiple times, it will use vector operations. We filter data sources so multiple downstream consumers can see different views on the same quote landscape

This requirement to **aggregate across venues** is also increasingly becoming the case in the equity market, where the large exchanges are losing volume and liquidity is more fragmented across pools and alternative sources





Open-source kdb+ tick plant offers streaming, in-memory and on-disk data analysis.

## Customers' motivation for ingest benchmark

- Streaming and historical analysis require different code. A simple example: average price by stock.
- Several applications tolerate (sub) millisecond latency but they require flexibility of a query language

# Fully integrated technology stack



## View. Transform. Share. Your Advantage.

- Connect directly to kdb+ for instant visualization (Dashboards Direct)
- Hardware accelerated rendering for faster display time
- Bespoke components and SDK enable solutions for surveillance, financial charting and more



Instant stream visualization  
for actionable insights





# For more information:

---

[www.kx.com](http://www.kx.com)



kxsystems



Kx



fdplc