

**Hewlett Packard
Enterprise**

HPE purpose-built portfolio for HPC and AI

**Keith Bazarnick, Master Engineer
Americas HPC Competency Center**

HPE purpose-built portfolio for HPC and AI

HPC and AI Industry Solutions



Financial Services



Academia, Research, Gov't



Life Sciences, Health



EDA / CAE Manufacturing



Oil and Gas, Energy



Weather and Climate Research

HPE POINTNEXT

Advisory, Professional and Operational Services – HPE Flexible Capacity for HPC, HPE Datacenter Care for Hyperscale

Supercomputing / Enterprise / Commercial HPC

HPE SGI 8600



Liquid cooled, delivering industry leading performance, density, & efficiency

HPE Apollo 6000



Extreme Compute Performance in High Density

HPE Apollo 2000

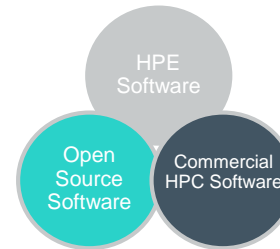


The bridge to enterprise scale-out architecture

High Performance Computing Software Portfolio

HPE Performance Software Suite

- HPE Insight Cluster Management Utility
- HPE SGI Management Suite
- HPE Performance Software – Message Passing Interface



HPC Purpose built

HPE Apollo 6500 Gen10



Purpose built scalable flexible manageable for ever changing workloads

HPE Apollo sx40



Early development platforms to ensure technology and production platforms address true need.

HPC Storage

HPE Apollo 4510



Additional Storage Options Available

HPC Data Management Framework Software

Large-scale, storage virtualization & tiered data management platform

HPC In-memory Compute

HPE Superdome X



Scale Up HPC

HPE MC990 X



Networking



Low latency, high bandwidth



Apollo 6500 Gen10 System

Overview

Deliver Automated Intelligence in Real-time for Deep Learning

Unprecedented performance and scale with HPE Apollo 6500 high density GPU solution



Use Cases



Video, Image, Text,
Audio, time series
pattern recognition

Large, highly complex,
unstructured simulation
and modeling

**Automated
Intelligence**
delivered by HPE
Apollo 6500 and Deep
Learning software
solutions

Real-time, near
real-time analytics

Faster Model training time, better fusion of data*

Customer benefits

HPE Apollo 6500 Gen10 is a highly modular Enterprise solution for HPC and Deep Learning providing **unprecedented performance with 8 GPUs, high bandwidth fabric and a three choices for GPU topology to match deep learning workloads**

- Up to 8 high powered GPUs per server, configurable PCIe system topologies, and **NVLink 2.0 in a hybrid cube mesh**
- Choice of high-speed, low latency fabrics with **4x IO expansion**
- Enterprise management- HPE iLO, HPE OneView

HPE Apollo 6500 Gen10 System: An elegant, powerful solution

The maximum performance and efficiency for GPU computing from HPE



Maximum Power in an Enterprise Server

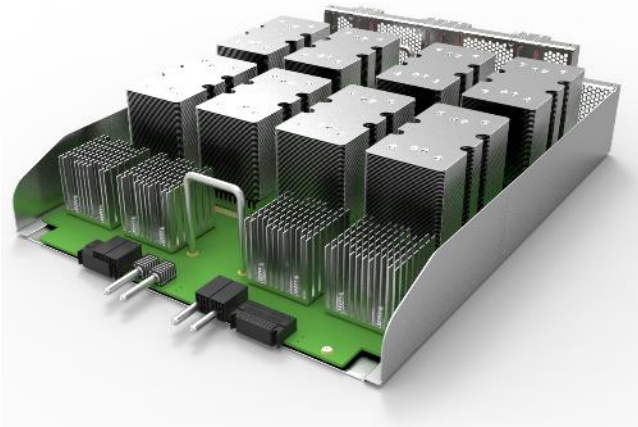
Traditional rack style server
Highly leveraged design based on DL380 Gen10
Integrated power supplies

NVLink 2.0 via SXM-2 GPU Module

Maximum GPU:GPU bandwidth for Deep Learning
Up to 8 HPE NVIDIA Tesla V100 for almost 1 PetaFlop HP

Traditional GPU support via PCIe Module

Supports your tested and qualified GPU
Configurable topologies





**Hewlett Packard
Enterprise**

Thank you